

ADDENDUM NO. 2
To Contract Documents for:
Des Moines Area Regional Transit Authority (DART)
Operations and Maintenance Facility – Phase 1
substance Project No. 0497-06

DATE: July 24, 2024

<p><u>ARCHITECT:</u> SUBSTANCE 1300 Walnut Street, Suite 201 Des Moines, IA 50309 515.699.1655 Contact: Matt Rodekamp, AIA <i>mrodekamp@substancearchitecture.com</i></p>	<p><u>CIVIL ENGINEER:</u> LT LEON 1823 Ohio Street Suite 101 Des Moines, IA 50314 515.422.7016 Contact: Luis Leon, PE, CFM, TSP <i>lleon@lleon.com</i></p>
<p><u>STRUCTURAL ENGINEER:</u> KPFF 604 Locust St, Suite 202 Des Moines, IA 50309 515.279.3900 Contact: Paul Taylor, PE, SE <i>paul.taylor@kpff.com</i></p>	<p><u>M/E/P/T ENGINEER:</u> IMEG CORP. 2882 106th Street Des Moines, IA 50322 515.334.9906 Mechanical Contact: Nate Jacques, PE <i>nathaniel.k.jacques@imegcorp.com</i> Electrical Contact: Kristen L. Spina, PE, LC <i>kristen.l.spina@imegcorp.com</i></p>
<p><u>LANDSCAPE ARCHITECTURE:</u> GENUS LANDSCAPE 520 42nd St Suite 400 Des Moines, IA 50312 515.284.1010 Contact: Scot Schuckert <i>sschuckert@Genus-LA.com</i></p>	

This addendum is issued to modify, clarify, or amend the original Project Manual and /or Drawings and is hereby made part of the Contract Documents dated June 28, 2024. The Contractor shall be responsible for incorporating items in this Addendum to the Work. Attach this addendum to the Project Manual(s) in your possession. Acknowledge receipt of this Addendum by number where indicated on the Bid Form. Failure to do so may subject Bidder to disqualification. The following shall take precedence over anything to the contrary in the Project Manual, in the Drawings, or in prior Addenda.

This Addendum consists of the following attachments:

1. One (1) 30"x42" Drawings. See list at end of document.
2. Three (3) Letter format pages. See list at end of document.

GENERAL INFORMATION / CLARIFICATIONS

1. All questions and substitution requests for the project should be forwarded to the attention of Matt Rodekamp at substance architecture (mrodekamp@substancearchitecture.com).
2. The new Electronic Access Control system for this project shall be an extension of the existing Gallagher / Salto system. Specification 281300, page 8, item 2.01 should be edited to retain Salto-Gallagher as item A. All other manufacturers should be deleted.
3. Automatic Gate Operators:
 - A. SW main entry gate will be automated. Several modes will be used to open gate including items mounted on entry pedestal: long range credentials on vehicles, short range readers for staff, intercom remote-release using telephone (SIP) integration via video intercom connected to phone system. Closing gate to be automated with buried loop sensor on secure side.
 - B. SE exit gate will be automated by means of buried loop sensors upon approach from secure side and closed by means buried loop sensor on non-secure side.
 - C. NE gate will manually operated, not be automated.
4. Stainless steel countertops:
 - A. Refer to F1/A5.04 for the stainless-steel countertop detail.
 - B. Stainless steel countertop at door O102-1 should be included in scope with the other stainless-steel countertops throughout the project.

CHANGES TO THE SPECIFICATION

5. **Section 00 43 13.05 Certification of Lower-Tier Participants Regarding Debarment**
 - A. **ADD** the following:
THIS FORM TO BE SUBMITTED WITHIN 48 HOURS OF THE BID'S DUE TIME.
6. **Section 00 74 08 - BP 08 CURTAIN WALLS AND GLAZING**
 - A. **REVISE** article A as follows:
 1. **OMIT** the following:
 - ~~III. 08 33 23 - OVERHEAD COILING DOORS~~
 - ~~IV. 08 36 13 - SECTIONAL DOORS~~
 2. **ADD** the following:
VI. 08 44 13 GLAZED ALUMINUM CURTAIN WALLS
7. **Section 01 22 00 – Unit Prices**
 - A. **REVISE** paragraph 1.06: F and G as follows:
 - F. Unit Price ~~07 06~~ - Temporary seeding
 1. Base Amount:
 2. Additional: Price in Dollars per ~~CY (\$/CY)~~ ***acre (\$/acre)***
 - G. Unit Price ~~08 07~~ – 40” ~~6”~~ PCC
 1. Base Amount:
 2. Additional: Price in Dollars per CY (\$/CY)

ADD to paragraph 1.06 as follows:
H. Unit Price 08 – 10” PCC
 - 1. Base Amount:***
 - 2. Additional: Price in Dollars per CY (\$/CY)***

8. **Section 23 74 16.12 - Packaged Rooftop Air Conditioning Units 25 Ton and Below**
 - A. Section title: **REVISE** as follows:
Packaged Rooftop Air Conditioning Units
 - B. Paragraph 2.03.D; **REVISE** as follows:
Insulation: Minimum of 1" thick neoprene coated glass fiber, R = 4.0 double-walled galvanized steel wall panels.
 - C. Paragraph 2.06 - Electric Heating Coil: **REVISE** as follows:
Hot Water Coil:
 - A. ***Provided and installed by unit manufacturer. Refer to Section 23 82 16 for requirements.***
 - D. Paragraph 2.08 - Hot Gas Reheat Coil, **DELETE** entirety of this paragraph.

CHANGES TO THE DRAWINGS

Electrical Drawings

1. **E4.00 – ELECTRICAL RISER DIAGRAM**
 - A. **REVISE** ATS detailing on Electrical Riser Diagram.

ATTACHMENTS

Electrical Sheets (1 Total)
E4.00

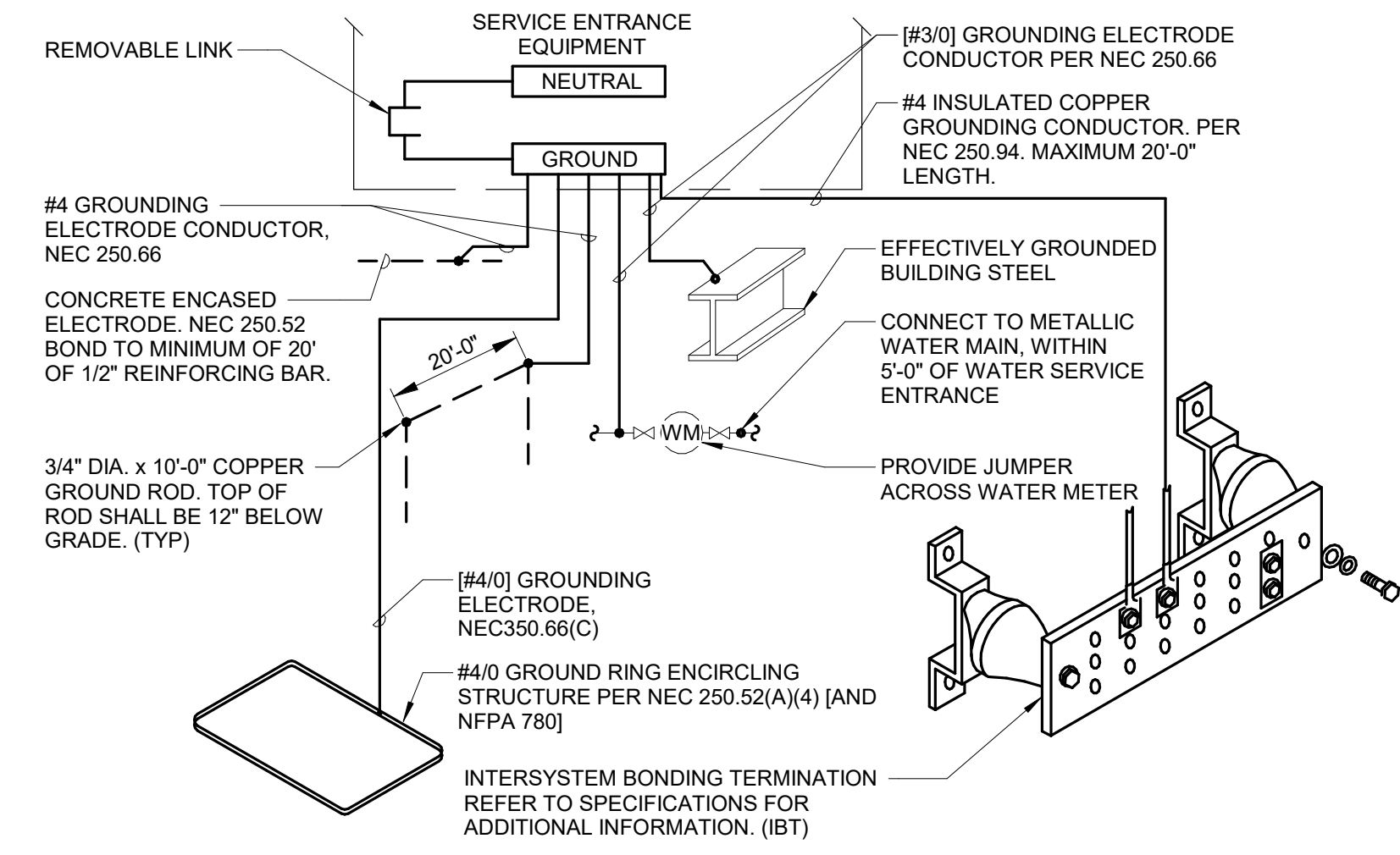
Total Sheet Count: 1

END OF ADDENDUM 02

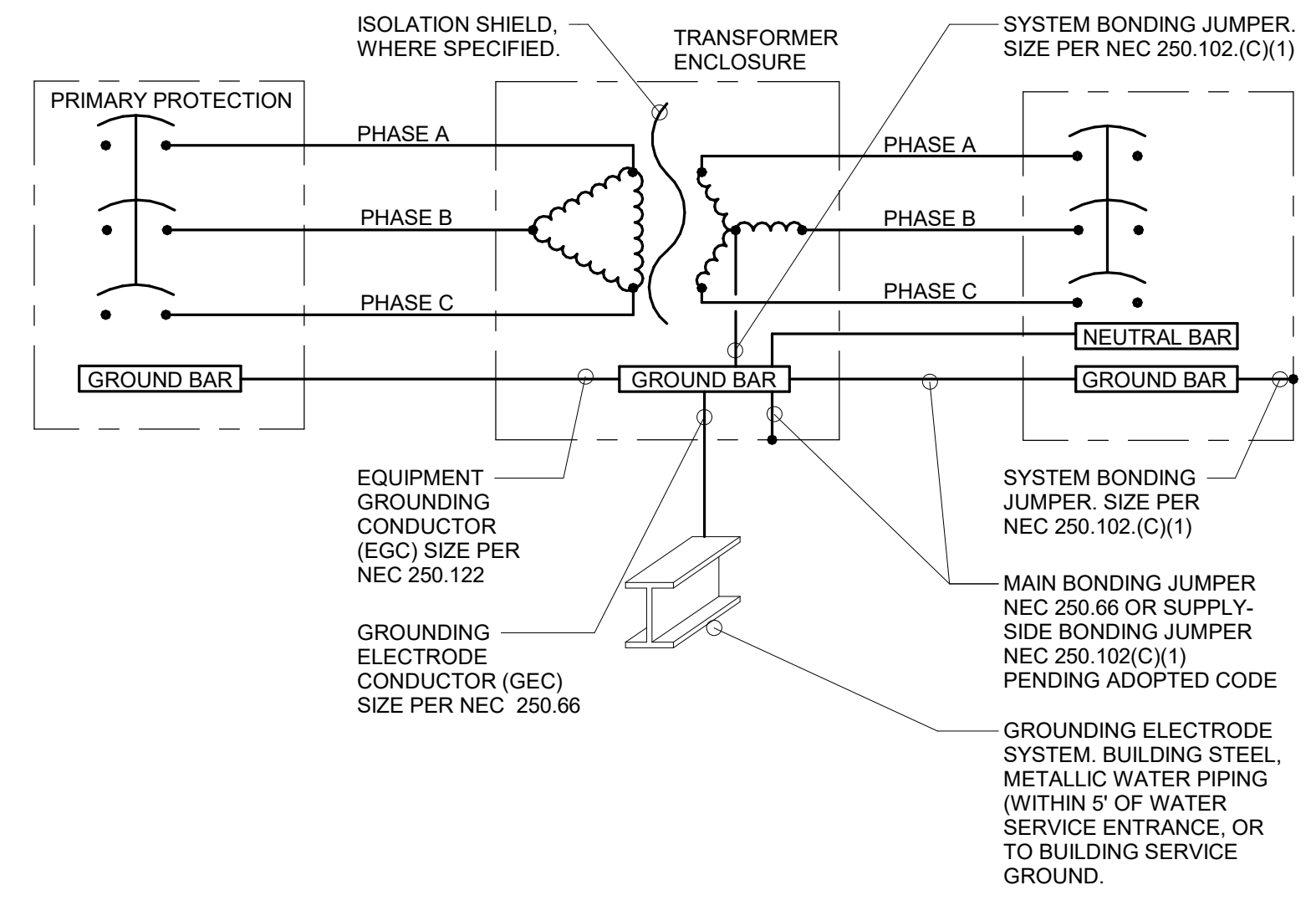
ELECTRICAL - RISER DIAGRAM NOTES:

- THE RISER DIAGRAM IS INTENDED TO CONVEY THE COMPONENTS OF THE ELECTRICAL DISTRIBUTION SYSTEM. REFER TO ELECTRICAL DRAWINGS, DETAILS, DISTRIBUTION / PANEL / EQUIPMENT / EQUIPMENT CONNECTION SCHEDULES, AND SPECIFICATIONS FOR ADDITIONAL INFORMATION.
- SHORT CIRCUIT CURRENT RATINGS (SCCR) FOR EQUIPMENT ARE MINIMUM REQUIREMENTS FOR BUS BRACING AND DEVICE RATING. ALL EQUIPMENT SHALL BE FULLY RATED UNLESS SPECIFICALLY NOTED AS SERIES RATED.
- THE BASIS OF DESIGN: THE CONTRACTOR SHALL BE RESPONSIBLE FOR DERATING AND SIZING CONDUCTORS AND CONDUITS TO EQUAL OR EXCEED AMPACITY OF THE BASIS OF DESIGN ARE APPLIED.
 - RACEWAY: EMT UNLESS OTHERWISE NOTED
 - FEEDER CHARACTERISTICS: ALL CURRENT CARRYING CONDUCTORS SHALL BE COPPER UNLESS NOTED OTHERWISE. REFER TO SPECIFICATION SECTION 25 05 13 WIRE AND CABLE FOR ADDITIONAL INFORMATION
 - GROUNDING AND BONDING CONDUCTORS SHALL BE COPPER.
 - CONDUCTORS (MOTORS): COPPER
 - (AL) INDICATES ALUMINUM CONDUCTOR
 - (BLNK) OR (CU) INDICATES COPPER CONDUCTOR
 - (CI) INDICATES CIRCUIT INTEGRITY CIRCUIT. FEEDER ROUTED OUTSIDE BUILDING OR 2 HOUR FIRE RATED
- PROVIDE GROUNDING ELECTRODE AND BONDING SYSTEM PER CODE REQUIREMENTS. PROVIDE THE FOLLOWING MINIMUM CONNECTIONS AND COMPONENTS. REFER TO SPECIFICATION SECTION 25 05 03 GROUNDING AND BONDING AND DETAILS WHEN APPLICABLE:
 - ELECTRICAL GROUND FIELD
 - CONCRETE ENCASED UFER GROUND
 - METALLIC WATER MAIN
 - BUILDING STEEL, EFFECTIVELY GROUND
 - INTERSYSTEM BONDING TERMINAL (BT)
 - GROUND RING ENCIRCLING STRUCTURE
- DRY TYPE TRANSFORMER AND SEPARATELY DERIVED SYSTEM GROUNDING. PROVIDE GROUNDING ELECTRODE CONDUCTOR FOR SEPARATELY DERIVED SYSTEM. ROUTE TO STRUCTURAL BUILDING STEEL WHEN AVAILABLE. OTHERWISE ROUTE TO MAIN GROUNDING ELECTRODE SYSTEM.
- PROVIDE O.Z. GENKEY OR EQUAL GROUND BUSHING FOR ALL SERVICE AND FEEDER RACEWAYS BONDED TO GROUND BUS WITH CONDUCTOR SIZED TO MAXIMUM FEEDER GROUND CAPACITY.
- CONDUCTORS AND GROUND SIZES ON THE LINE AND LOAD SIDES OF ALL DISCONNECT SWITCHES SHALL BE IDENTICAL UNLESS NOTED OTHERWISE.
- REFER TO COVER SHEET FOR ADDITIONAL EQUIPMENT TAG INFORMATION (SPD-#, M-#, ETC).
- REFER TO GROUNDING ELECTRODE SYSTEM AND BONDING DETAILS
- CIRCUIT BREAKER CHARACTERISTICS AND ACCESSORIES:
 - (CB) INDICATES CIRCUIT BREAKER
 - (FS) INDICATES FUSED SWITCH
 - (LSIG) INDICATES FEATURES PROVIDED WITH SOLID STATE CIRCUIT BREAKER (LONG TIME (W/DELAY), SHORT TIME (W/DELAY), INSTANTANEOUS, GROUND FAULT)
 - (LSIA) INDICATES FEATURES PROVIDED WITH SOLID STATE CIRCUIT BREAKER (LONG TIME (W/DELAY), SHORT TIME (W/DELAY), INSTANTANEOUS, GROUND FAULT ALARM (NO GROUND FAULT TRIP))
 - (GFR) INDICATES GROUND FAULT RELAY
 - (AER) INDICATES ARC ENERGY REDUCTION SYSTEM
 - (100% RATED) INDICATES INSULATED CASE BREAKER RATED FOR FULL CONTINUOUS CAPACITY OF CIRCUIT BREAKER NAMEPLATE
 - (DRAWN) INDICATES DRAWOUT DEVICES
 - (LOCK) INDICATES PADLOCK HASP
 - (RED) INDICATES RED HANDLE
 - (SHUNT) INDICATES SHUNT TRIP BREAKER
 - (KIRK) INDICATES KIRK KEY
- BRANCH PANEL KEY:
 - "A" = ARC FAULT CIRCUIT INTERRUPT
 - "G" = GROUND FAULT CIRCUIT INTERRUPT
 - "I" = ISOLATED GROUND
 - "M" = BRANCH CIRCUIT MONITOR
 - "P" = PADLOCK HASP
 - "R" = RED HANDLE
 - "S" = SHUNT TRIP
- ADDITIONAL ABBREVIATIONS:
 - EGC - EQUIPMENT GROUNDING CONDUCTOR
 - GEC - GROUNDING ELECTRODE CONDUCTOR
 - SSBJ - SUPPLY SIDE BONDING JUMPER

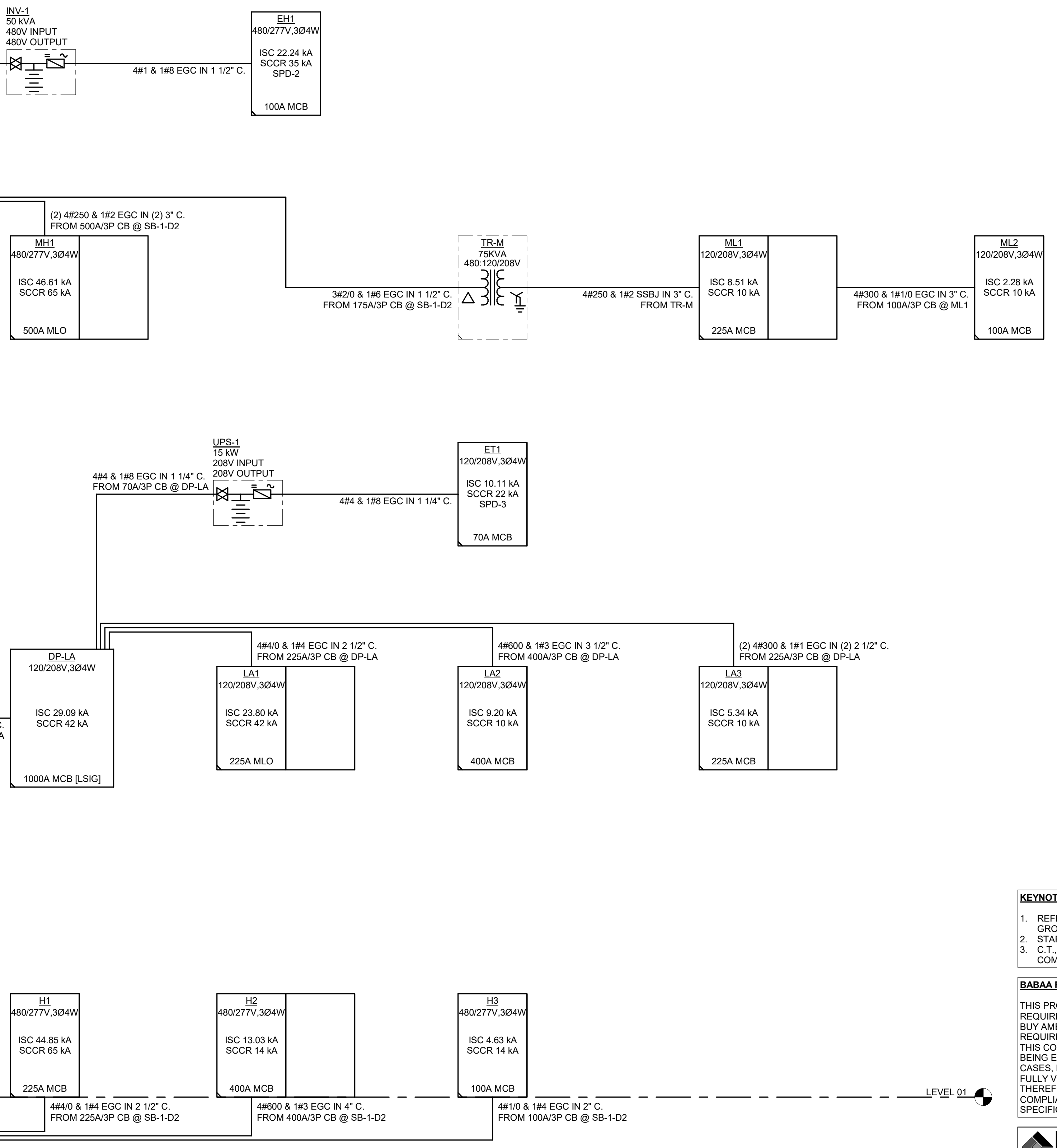
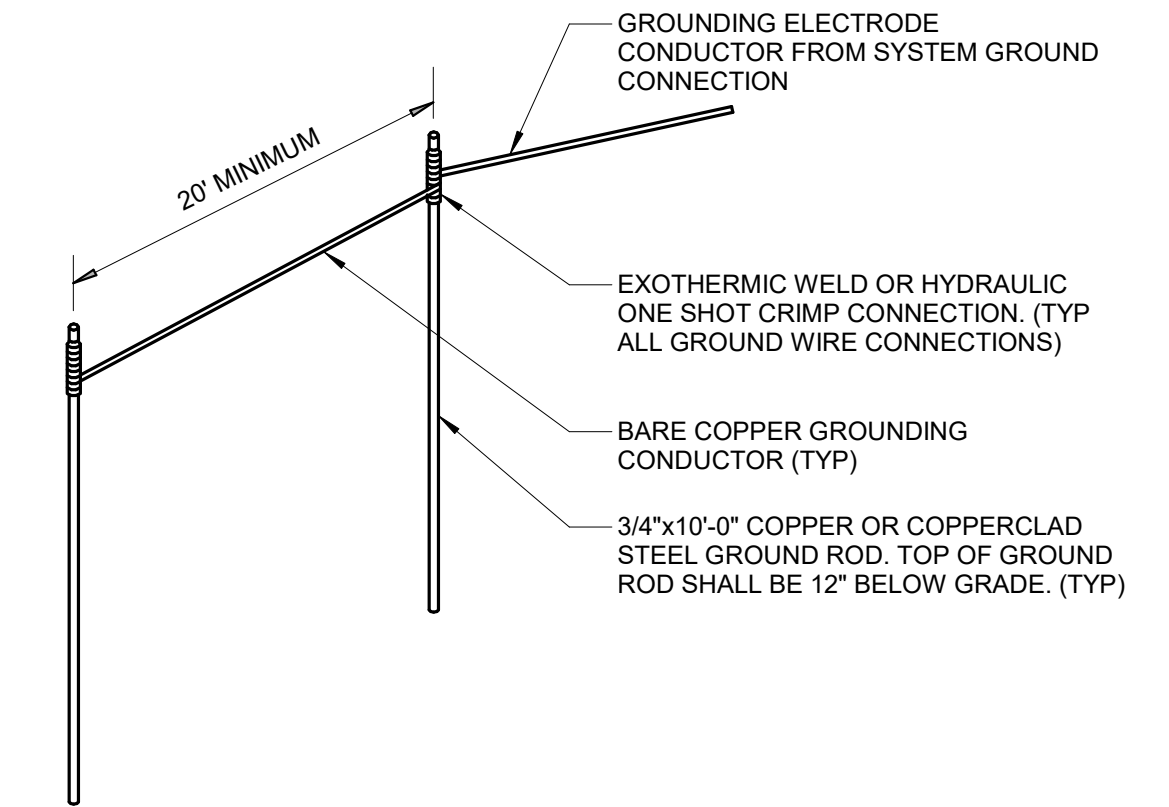
2 SERVICE ENTRANCE GROUNDING ELECTRODE SYSTEM DETAIL
NO SCALE



3 TRANSFORMER WIRING DETAIL
NO SCALE



4 GROUND GRID DETAIL
NO SCALE



1 RISER DIAGRAM - ELECTRICAL
NO SCALE

- KEYNOTES:**
- REFER TO 2/E4.00 FOR SERVICE ENTRANCE GROUNDING DETAIL.
 - START WIRING FOR FUTURE GENERATOR.
 - C.T., P.T., AND METERING CABINET PER UTILITY COMPANY REQUIREMENTS.

BABAA REQUIREMENTS:

THIS PROJECT RECEIVES FEDERAL FUNDING WHICH REQUIRES COMPLIANCE WITH THE BUILD AMERICA ACT (BABAA), AND AS SUCH, THE REQUIREMENTS DESCRIBED ARE A REQUIREMENT OF THIS CONTRACT UNLESS SPECIFICALLY NOTED AS BEING EXEMPT IN CONTRACT DOCUMENTS. IN SOME CASES, PRODUCT COMPLIANCE COULD NOT BE FULLY VERIFIED PRIOR TO FINAL DOCUMENTATION. THEREFORE, THE CONTRACTOR MUST VERIFY COMPLIANCE PRIOR TO PLACING ORDER. REFER TO SPECIFICATIONS FOR ADDITIONAL INFORMATION.

IMEG
2882 10TH STREET
DES MOINES, IA 50322
P: 515.334.9908 F: 515.334.9908

REF. SCALE IN INCHES: 0 1 2 3
PROJECT #2308215.00

substancearchitecture
1300 Walnut Street, Suite 201
Des Moines, Iowa 50309
Ph. 515.243.4407
www.substancearchitecture.com

TRANSIT CONSULTANT
WSP
16200 Park Row, Suite 200
Houston, Texas 77084
Ph. 281.589.5900
www.wsp.com

CIVIL ENGINEER
LT Leon Associates
500 E. Locust Street, Suite 400
Des Moines, Iowa 50309
Ph. 515.422.7016
www.lleon.com

LANDSCAPE ARCHITECT
Genus
520 42nd St. Suite 400
Des Moines, Iowa 50309
Ph. 515.264.1910
www.genus-ia.com

STRUCTURAL ENGINEER
KPFF
604 Locust Street, Suite 202
Des Moines, Iowa 50309
Ph. 515.279.3900
www.kpff.com

M/E/P/T ENGINEER
IMEG
2882 10th Street
Urbandale, Iowa 50322
Ph. 515.334.9908
www.imegcorp.com

Des Moines Area Regional Transit Authority (DART)
Operations and Maintenance Facility - Phase 1
3500 Vandalia Road
Des Moines, IA 50317

Construction Set

Substance No.: 0497-06
Date: June 28, 2024
Revisions
MARK DESCRIPTION DATE
1 ADD #2 07/23/2024